

<b>Roll: 536182003</b>	<b>Alt. Key:</b>	Red Deer	25 miles	92%
<b>Legal: NW-18-36-3-5</b>			Access:	100%
Agroclimatic Zone: 17 2H-S	Photo:86	Type:	Net Location:	92%

No: 1	72.30 Acres	Soil: 3	Bk t-	Dryland Arable	Adjusted Rating: 86.0%		
				%Fld	NPR	ICP	
30	Ap Depth/Color		1 AP0-AP1 (avg)	50 100%	-2.0	0.0	
41	Subsoil		8 CL	50 100%	0.0	0.0	
44	Poorly Drained		2 P1	50 25%	-2.2	0.0	
51	Ap Texture		12 L	50 100%	0.0	0.0	
64	Flooding		1 FD1	50 100%	-1.0	0.0	
71	Topography		6 U	50 100%	0.0	-2.0	
72	Stone Cover		21 S0-S1 (avg)	50 100%	0.0	-1.5	
73	Miscellaneous		1 Obstacles	15 100%	0.0	-15.0	
					-5.3	-18.5	
Group ID: 164035260				72.30 Acres x	350.0 / acre x	1.0000 x	62.2 % = 15,740

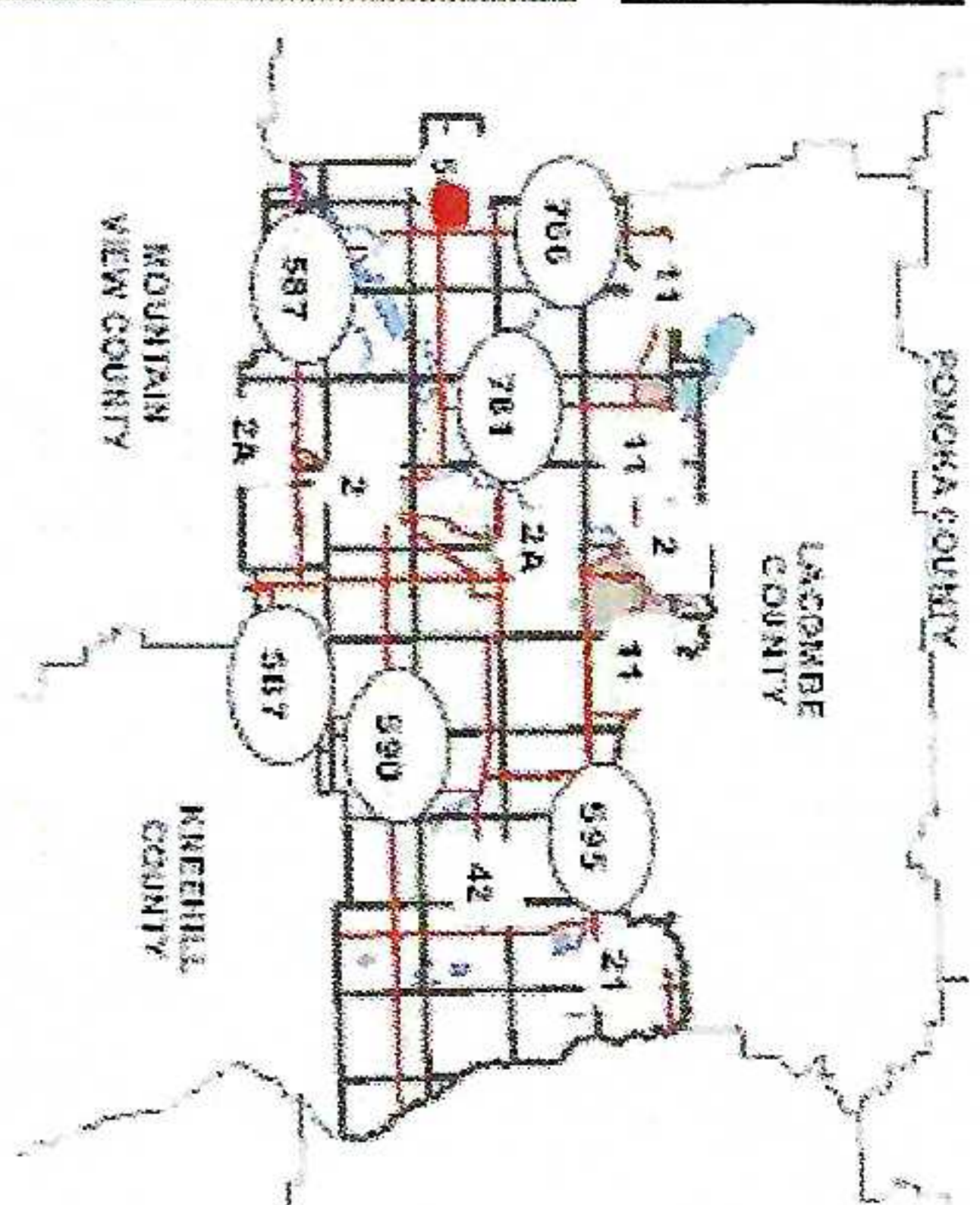
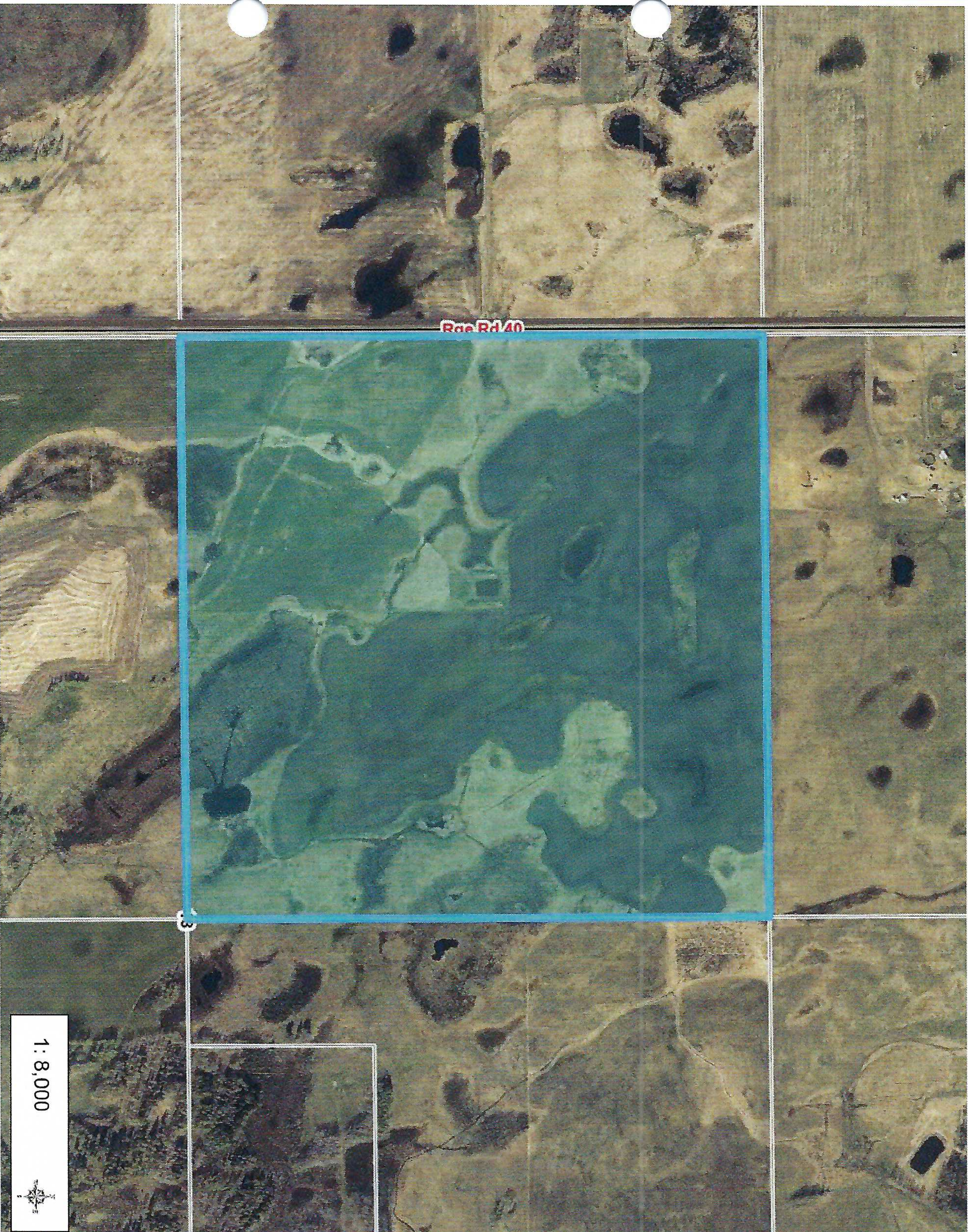
No: 2	49.46 Acres	Soil: 3	Bk t-	Dryland Arable	Adjusted Rating: 86.0%		
				%Fld	NPR	ICP	
30	Ap Depth/Color		1 AP0-AP1 (avg)	50 100%	-2.0	0.0	
41	Subsoil		8 CL	50 100%	0.0	0.0	
44	Poorly Drained		1 P0-P1 (avg)	90 100%	-7.3	0.0	
51	Ap Texture		12 L	50 100%	0.0	0.0	
64	Flooding		2 FD2	50 100%	-2.0	0.0	
71	Topography		3 L-GU	50 100%	0.0	0.0	
72	Stone Cover		21 S0-S1 (avg)	50 100%	0.0	-1.5	
73	Miscellaneous		1 Obstacles	15 100%	0.0	-15.0	
					-11.3	-16.5	
Group ID: 164035261				49.46 Acres x	350.0 / acre x	1.0000 x	58.2 % = 10,075


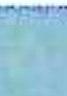



No: 3	33.06 Acres	Soil: 80	Pasture	Dryland Pasture			
				%Fld	NPR	ICP	
81	Native		36 36 Ac/AU	50 100%	16.0	0.0	
99	Description		15 Reverting	50 100%	0.0	0.0	
99	Description		17 Depressional Area	50 100%	0.0	0.0	
99	Description		18 Peat Spots	50 100%	0.0	0.0	
					16.0	0.0	
Group ID: 164035262				33.06 Acres x	350.0 / acre x	1.0000 x	16.0 % = 1,851

No: 4	5.18 Acres	Soil: 80	Pasture	Dryland Pasture			
				%Fld	NPR	ICP	
81	Native		70 70 Ac/AU	50 100%	6.5	0.0	
99	Description		2 Perm. Sls.	50 100%	0.0	0.0	
					6.5	0.0	
Group ID: 164035263				5.18 Acres x	350.0 / acre x	1.0000 x	6.5 % = 118


Areas	Asmt Code	Areas	A.U.V.			
Parcel: 160.00	100 100%	Arable Dry:	121.76	25,815	<b>Total: A.U.V. 27,784</b>	
@ F/L Rates: 160.00		Arable Irr:	0.00	0		x 92%
		Pasture Dry:	38.24	1,969		<b>F.A.V. 25,560</b>
		Pasture Irr:	0.00	0		
		Waste:	0.00	0		





- Legend**
-  Railways
  -  Waterbodies
  -  Other Municipality
  -  Parcels
  -  Non-Titled Parcels

1 : 8,000



This map is a user generated static output from an Internet mapping site and is for reference only. Data layers that appear on this map may or may not be accurate, current, or otherwise reliable.

THIS MAP IS NOT TO BE USED FOR NAVIGATION

0.4  
0  
0.20  
0.4 Kilometers

NAD\_1983\_10TM\_AEP\_Resource  
© Latitude Geographics Group Ltd.

**Notes**