



SecR - 35172

HAMILTON CDN-SUP GILBY
Tank Battery, Borrow Pit
Flow Line and Access Road
Sec's. 186 Tp. 42 Rge. 48 S W. 5 M.

A 2207 0417

SCALE: 400 FT. TO 1 IN.

Surface lease
 Oct 17/63
 A 2207-0417-0

I CERTIFY THAT THE SURVEY REPRESENTED BY THIS PLAN IS CORRECT AND TRUE TO THE BEST OF MY KNOWLEDGE AND WAS COMPLETED ON 17th DAY OF OCTOBER, 1963.

[Signature]
 A.L.S.


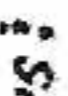
WITNESS
[Signature]
 MIDWEST SURVEYS (ALBERTA) LIMITED

OPERATOR:
 HAMILTON BROTHERS CANADIAN
 GAS COMPANY LTD.
[Signature]

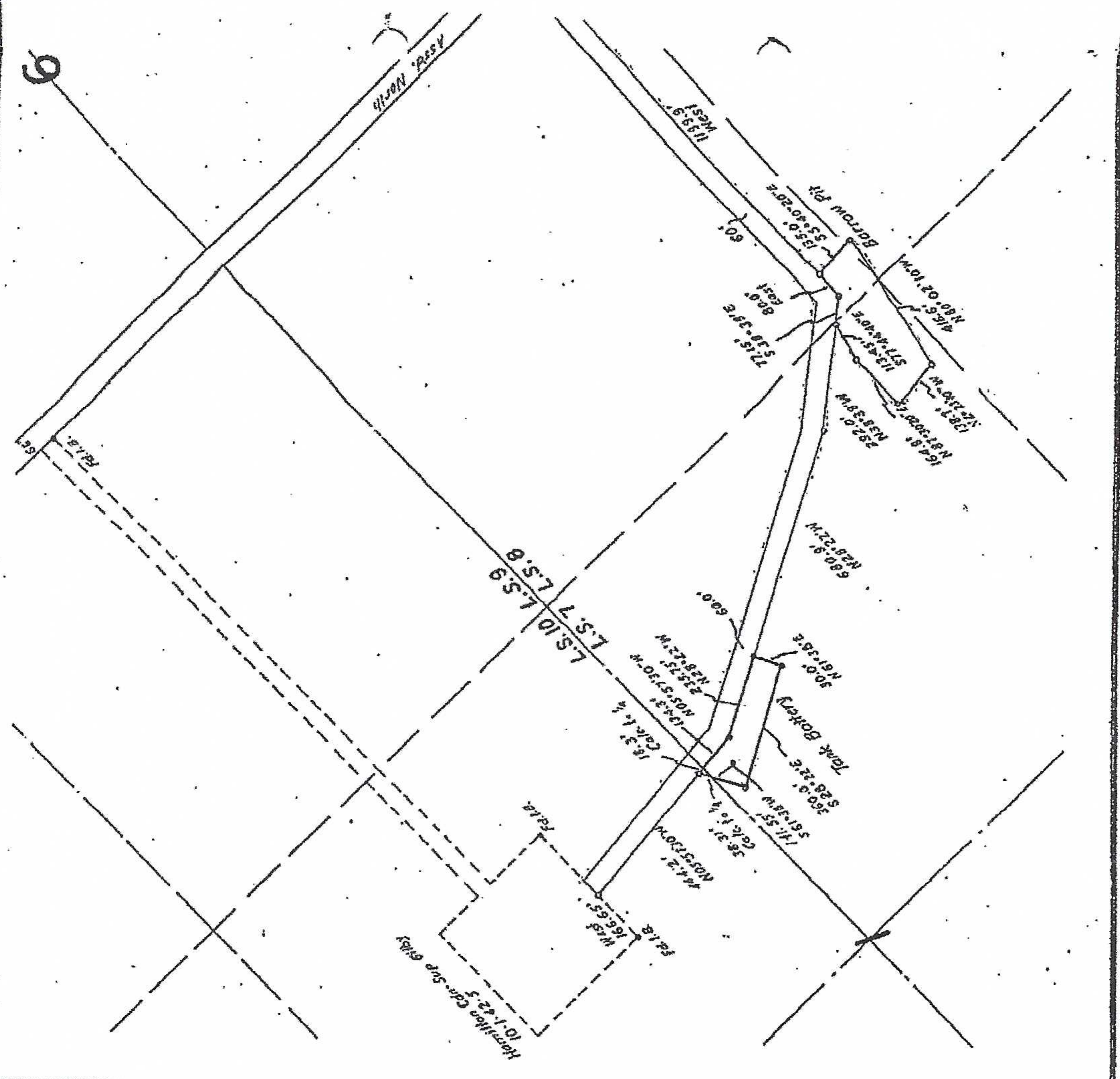
[Signature]

AREAS:

Tank Battery in N.E. 1/4	0.01	acs.
Tank Battery in S.E. 1/4	0.81	acs.
Borrow Pit	1.43	acs.
Access Road in N.E. 1/4	0.64	acs.
Access Road in S.E. 1/4	3.62	acs.
Flow Line in S.W. 1/4	0.92	acs.
Total	7.43	acs.

Survey monuments found shown thus: 
 Survey monuments planted shown thus: 
 Perches referred to outlined - - - - -
 Distances are in feet and decimals

C429/63



P GILBY
 Pit
 Road
 8.5 W.5M.

Public lease - March 27/63
 A2207 0402-0

Battery in NE 1/4 0.01 acs.
 Pit in SE 1/4 0.81 acs.
 Pit 1.43 acs.
 Road in NE 1/4 0.64 acs.
 Road in SE 1/4 3.62 acs.
 8 in SW 1/4 0.92 acs.
 7.43 acs.

cents found shown thus: •
 this printed shown thus: ◦
 red to outlined - - - - -
 in feet and decimals

C429/63

